

Assembly / Installation Instructions

Non-Piercing Roof Mounts can be utilised in a number of ways; most popular of which is to support bird control netting frameworks. The mounts can also be used to mount bio-acoustic bird scaring systems on roofs or to anchor Hawk Kite bird scaring kits on flat / shallow pitched roofs. These instructions cover basic assembly and positioning of the mounts. For specific instructions and guidance on how to integrate the mounts into your netting, bio-acoustic or hawk kite installation, please refer to the relevant installation guides available from PestFix's online resource centre at www.pestfix.co.uk/resource_centre.asp

Intermediate Non-Piercing Roof Mounts

NF186-1 & NF186-2 (1 & 2m Variants)

1. Before you start work check the contents of each Intermediate Non-Piercing Roof Mount Kit.

Each kit comes with:

- 1 X 2-slab Base Tray
- 1 X T-shaped Centre Pole (either 1m or 2m)
- 2 X M10 X 75mm Bolts
- 2 X M10 Nuts
- 4 X M10 X 20mm O.D. X 2mm Plain Washers

In addition to the kit you will also need 2 x 17mm spanners and 2 X (450mm X 450mm) paving slabs for each mount

2. Prior to assembly ensure that the roof area where the mount is to be placed is free from all foreign objects, to prevent the mount forcing such items through the roof membrane if it were to be placed on top of said debris.
3. Insert the Box section end of the T-bar pole into the slot in the centre of the tray and align the bolt holes in the tray walls with the bolt holes in the box section.
4. Slide one of the plain washers over each of the M10 75mm bolts and then insert the bolts through the holes in the tray centre wall, through the box section T-bar and out through the other side of the tray wall.
5. Once the bolts are protruding through the other side of the tray wall centre section, slide one washer over the end of each of the two bolts followed by the M10 nut and tighten until there is no movement between the T-bar and the base tray.
6. Prior to inserting the paving slabs, place the mount in the desired position on the roof, this will be a lot easier without the weight of the paving slabs! Once in position place one paving slab in each side of the base tray.
7. Ensure that the paving slabs sit flat in the bottom of the tray. If the bolt, or nut head does not allow this, take a notch out of the paving slab.
8. The mount is now ready for use.



Corner Non-Piercing Roof Mounts NF187-1 & NF187-2 (1 & 2m Variants)

1. Before you start work check the contents of each Corner Non-Piercing Roof Mount Kit.

Each kit comes with:

2 X 2-slab Base Tray

1 X T-shaped Centre Pole (either 1m or 2m)

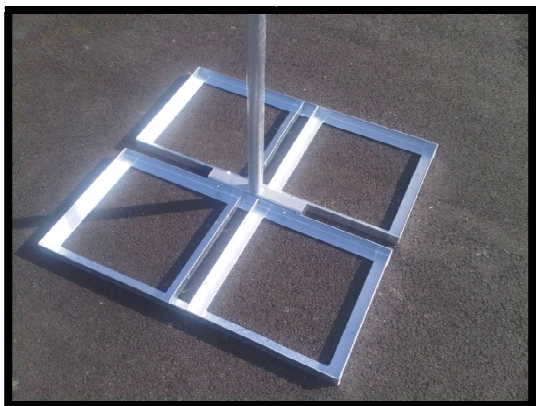
2 X M10 X 75mm Bolts

2 X M10 Nuts

4 X M10 X 20mm O.D. X 2mm Plain Washers

In addition to the kit you will also need 2 x 17mm spanners and 4 X (450mm X 450mm) paving slabs for each mount

2. Prior to assembly ensure that the roof area where the mount is to be placed is free from all foreign objects, to prevent the mount forcing such items through the roof membrane if it were to be placed on top of said debris.
3. Place the Box section end of the T-bar pole alongside the edge of the first base tray that has the holes in it. Align the holes in the tray wall with the holes in the T-Bar..
4. Slide one plain washer over each of the M10 75mm bolts and then insert the bolts through the holes in the tray wall and through the box section T-bar so that the threads protrude the other side.
5. Offer-up the second tray and feed the protruding bolts from the T-bar through the bolt holes in the tray side wall.
6. Slide one washer over the end of each of the two bolts that are now protruding through the second tray wall followed by the M10 nut and tighten until there is no movement between the T-bar and the base tray.
7. Prior to inserting the paving slabs, place the mount in the desired position on the roof, this will be a lot easier without the weight of the paving slabs! Once in position place one paving slab in each of the four recessed areas of the base trays
8. Ensure that the paving slabs sit flat in the bottom of the trays. If the bolt head, or nut does not allow this, take a notch out of the paving slab.
9. The mount is now ready for use.



T. +44 (0)1903 538 488 F. +44 (0)1903 539 331

URL: www.pestfix.co.uk Email: sales@pestfix.co.uk